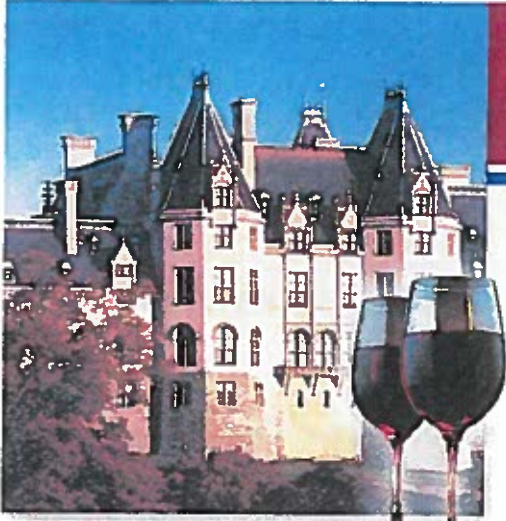


ASHEVILLE & THE BILTMORE NC

"...tour America's largest privately-owned home!"



6 DAYS - 5 NIGHTS

SEPTEMBER 23 - 28, 2018

\$689.00 per person
double occupancy

898.00 as SINGLE



PACKAGE INCLUDES:

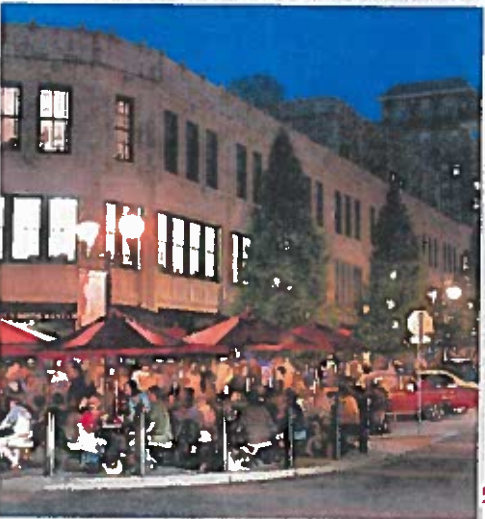
- * 5 Nights lodging, including overnights
- * 5 Breakfasts
- * 3 Dinners, including a Cookout in the Meadows & the Blue Ridge Mountain Opry with dinner
- * Guided tour of Asheville
- * Biltmore Estate, Gardens, & Winery Tour
- * Grove Arcade
- * Folk Art Center
- * Blue Ridge Parkway Visitor's Center
- * Tour of Chimney Rock Park
- * Cruise on Lake Lure
- * Souvenir gift
- * Luggage handling in Asheville
- * Taxes and meal gratuities
- * Motorcoach transportation

Cancellation insurance available upon request



FOR INFORMATION AND RESERVATIONS CONTACT:

NEW FAIRFIELD SENIOR CENTER
Mary Smith
(203) 312-5665



Travel 26 E. Lancaster Ave., Reading PA 19607 | 610.775.5000



WHITE STAR TOURS

America's Leader in Group Travel

26 E. Lancaster Ave., Reading PA 19607 | 610.775.5000